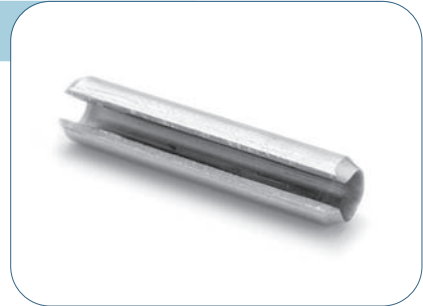
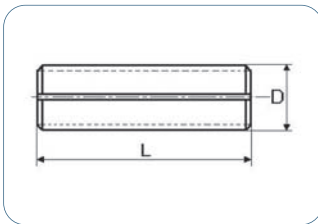


**GOUPILLES ÉLASTIQUES ISO8752  
OU DIN1481 (ÉPAISSE)  
SPRING PINS ISO8752 OR DIN1481 (HEAVY DUTY)**



- ☑ Les goupilles élastiques série épaisse sont sockées selon l'ISO8752  
Heavy duty spring pins are stocked in ISO8752
- ☑ Désignation : Goupilles élastiques ISO8752 D x L  
Description: Spring pins [standard] D x L



Matière = Acier à ressort 55Si7  
Material: spring steel 55Si7

| D   | L |   |   |   |    |    |    |    |    |    |    |    |    |    |    |    |    |    |    |    |    |    |    |    |    |    |    |    |     |     |     |     |     |
|-----|---|---|---|---|----|----|----|----|----|----|----|----|----|----|----|----|----|----|----|----|----|----|----|----|----|----|----|----|-----|-----|-----|-----|-----|
| 1,5 | 4 | 5 | 6 | 8 | 10 | 12 | 14 | 16 | 18 | 20 |    |    |    |    |    |    |    |    |    |    |    |    |    |    |    |    |    |    |     |     |     |     |     |
| 2   | 4 | 5 | 6 | 8 | 10 | 12 | 14 | 16 | 18 | 20 | 22 | 24 | 26 | 28 | 30 |    |    |    |    |    |    |    |    |    |    |    |    |    |     |     |     |     |     |
| 2,5 |   | 5 | 6 | 8 | 10 | 12 | 14 | 16 | 18 | 20 | 22 | 24 | 26 | 28 | 30 |    |    |    |    |    |    |    |    |    |    |    |    |    |     |     |     |     |     |
| 3   |   | 5 | 6 | 8 | 10 | 12 | 14 | 16 | 18 | 20 | 22 | 24 | 26 | 28 | 30 | 32 | 35 | 40 |    |    |    |    |    |    |    |    |    |    |     |     |     |     |     |
| 3,5 |   |   |   | 8 | 10 | 12 | 14 | 16 | 18 | 20 | 22 | 24 | 26 | 28 | 30 | 32 | 35 | 40 |    |    |    |    |    |    |    |    |    |    |     |     |     |     |     |
| 4   |   |   |   | 8 | 10 | 12 | 14 | 16 | 18 | 20 | 22 | 24 | 26 | 28 | 30 | 32 | 35 | 40 | 45 | 50 |    |    |    |    |    |    |    |    |     |     |     |     |     |
| 5   |   |   |   | 8 | 10 | 12 | 14 | 16 | 18 | 20 | 22 | 24 | 26 | 28 | 30 | 32 | 35 | 40 | 45 | 50 | 55 | 60 | 65 | 70 | 75 | 80 |    |    |     |     |     |     |     |
| 6   |   |   |   |   | 12 | 14 | 16 | 18 | 20 | 22 | 24 | 26 | 28 | 30 | 32 | 35 | 40 | 45 | 50 | 55 | 60 | 65 | 70 | 75 | 80 | 85 | 90 | 95 | 100 |     |     |     |     |
| 8   |   |   |   |   | 10 | 12 | 14 | 16 | 18 | 20 | 22 | 24 | 26 | 28 | 30 | 32 | 35 | 40 | 45 | 50 | 55 | 60 | 65 | 70 | 75 | 80 | 85 | 90 | 95  | 100 | 120 |     |     |
| 10  |   |   |   |   | 10 | 12 | 14 | 16 | 18 | 20 | 22 | 24 | 26 | 28 | 30 | 32 | 35 | 40 | 45 | 50 | 55 | 60 | 65 | 70 | 75 | 80 | 85 | 90 | 95  | 100 | 120 | 140 |     |
| 12  |   |   |   |   | 10 | 12 | 14 | 16 | 18 | 20 | 22 | 24 | 26 | 28 | 30 | 32 | 35 | 40 | 45 | 50 | 55 | 60 | 65 | 70 | 75 | 80 | 85 | 90 | 95  | 100 | 120 | 140 | 160 |

Boîtes assortiments goupilles voir p. 26  
Boxed sets of pins, see p. 26

**SUR DEMANDE**  
ON REQUEST

- Dimensions et tolérances spéciales  
Other tolerances and dimensions
- Matières spéciales notamment en inox  
Special materials, particularly stainless steel